



Der mechanische Ileus -

Röntgen und alternative Bildgebende Verfahren

Nele Eley

Mechanischer Ileus Ja / Nein ?



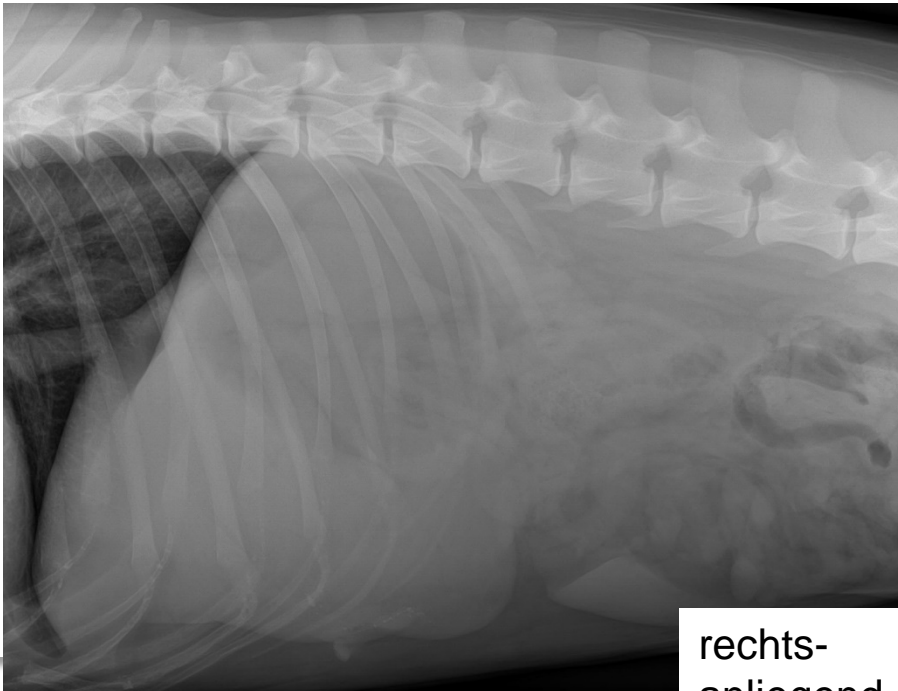
Hoher Evidenzgehalt

Primärdiagnostikum

Schnell – auch bei instabilen Patienten möglich

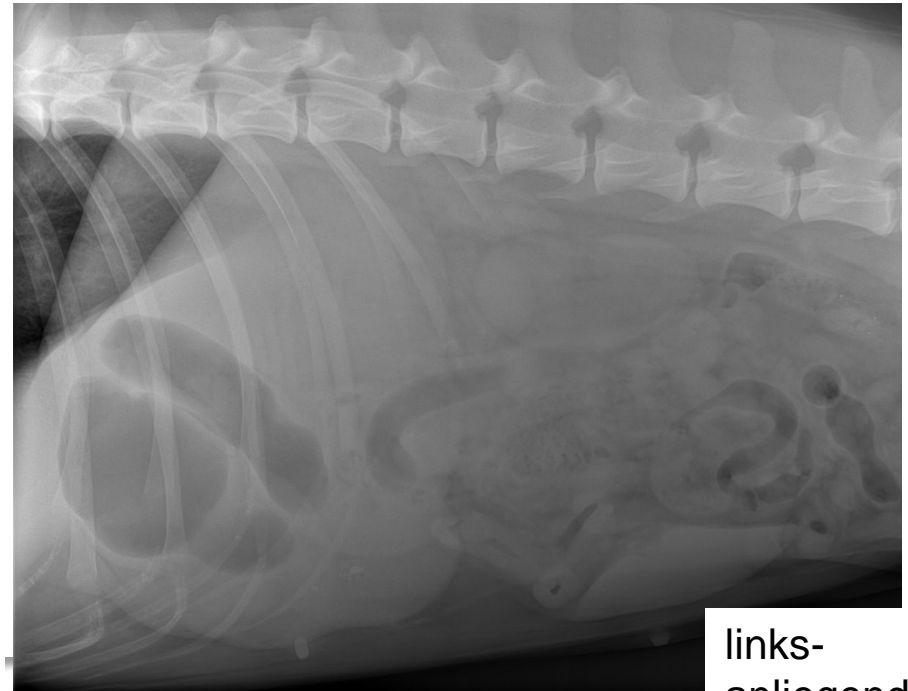
Insbesondere zur Unterscheidung chirurgischer von nicht-chirurgischen Notfällen

2. Untersuchungstechnik Strahlengang!



BILDGEBUNG GASTROINTESTINALTRAKT

rechts-
anliegend



NELE ONDREKA – UNI

links-
anliegend

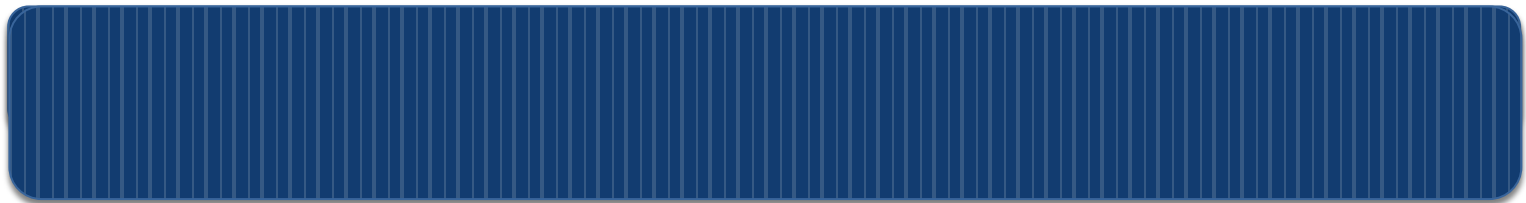
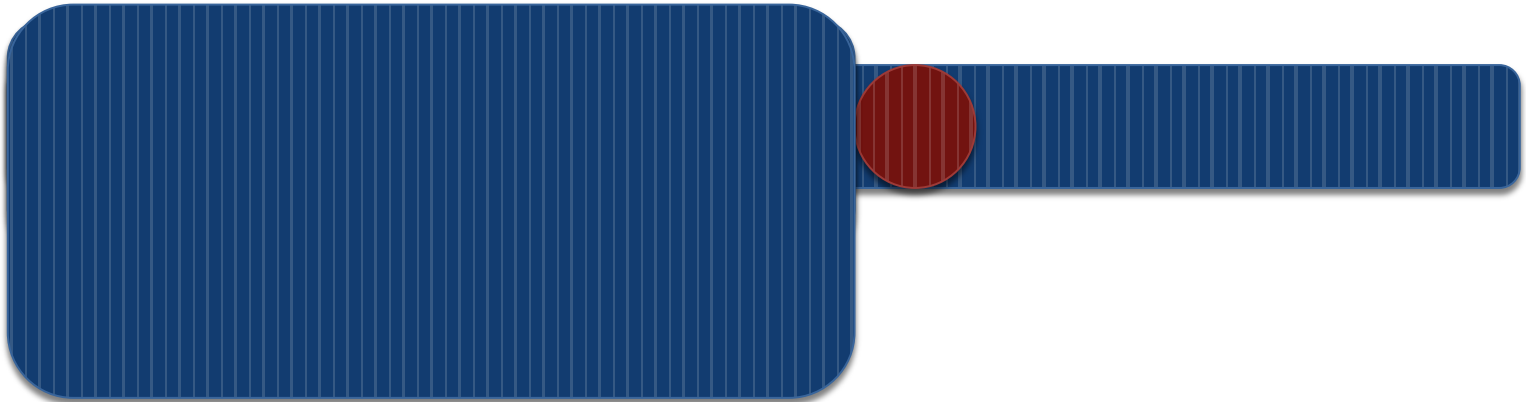
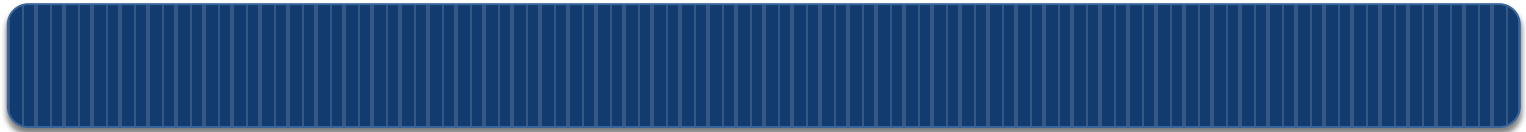


Anubis

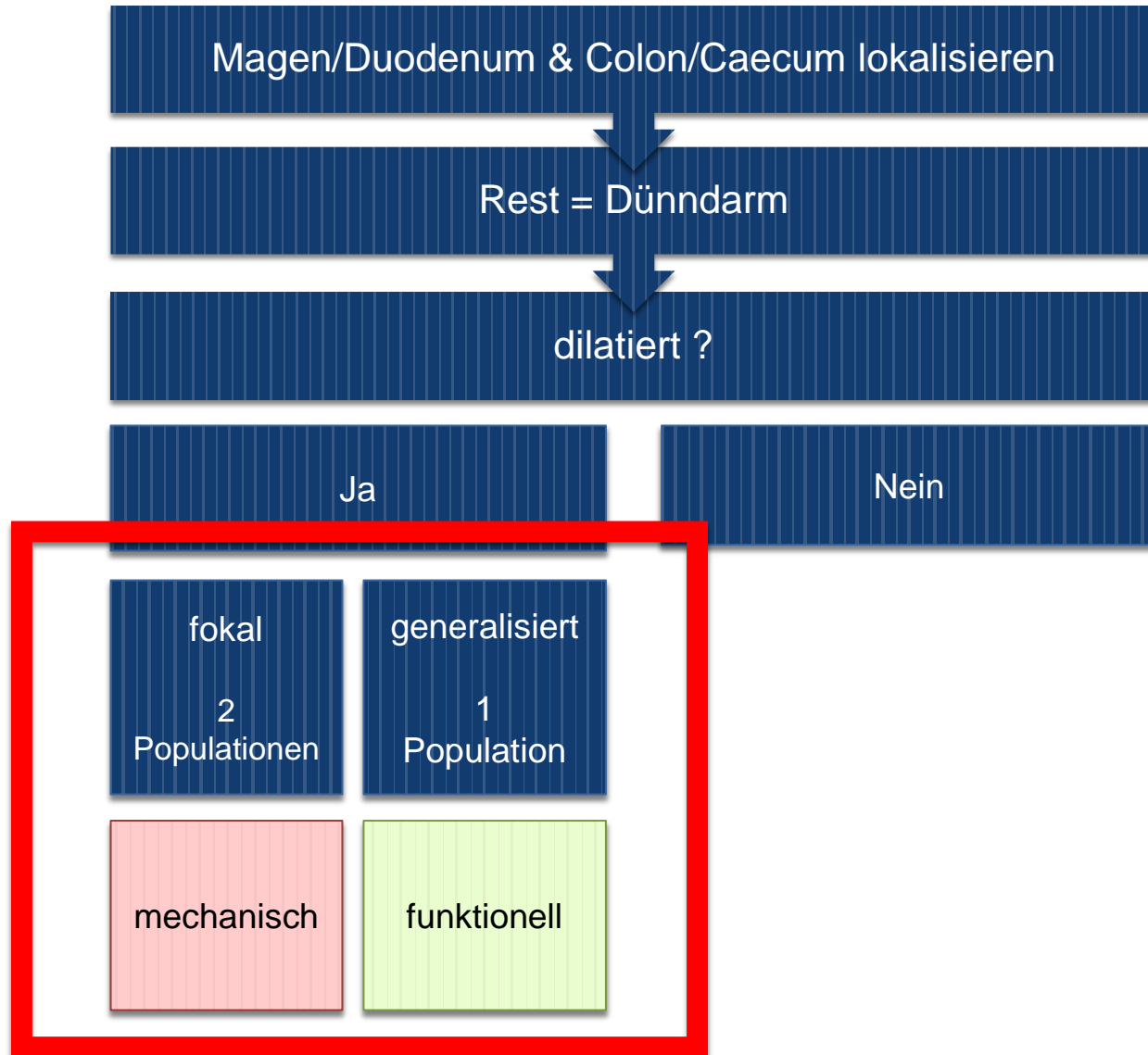
Dalmatiner, 4 Jahre
Akutes Erbrechen

Chirurgisch vs. Nicht-chirurgisch

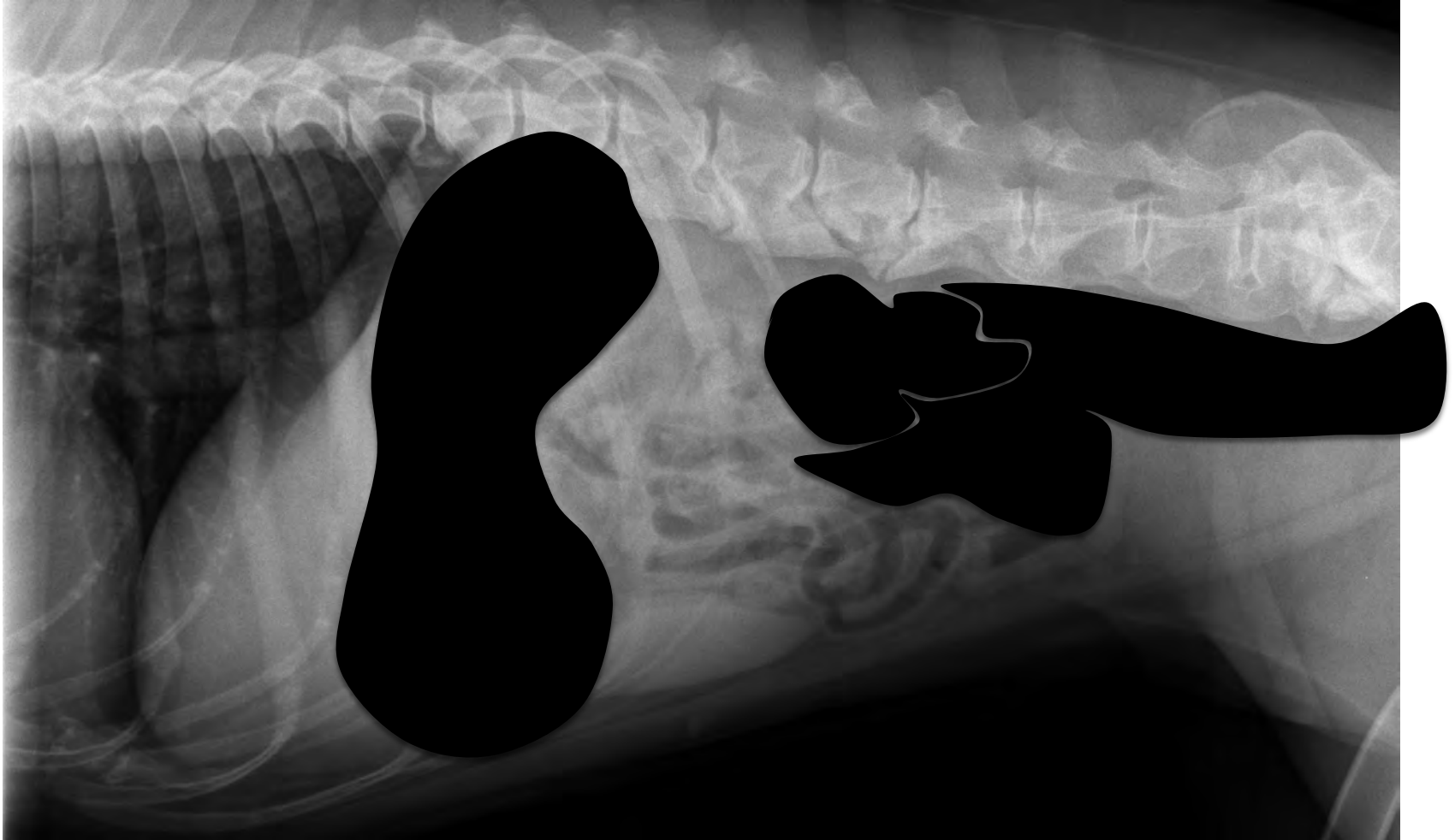




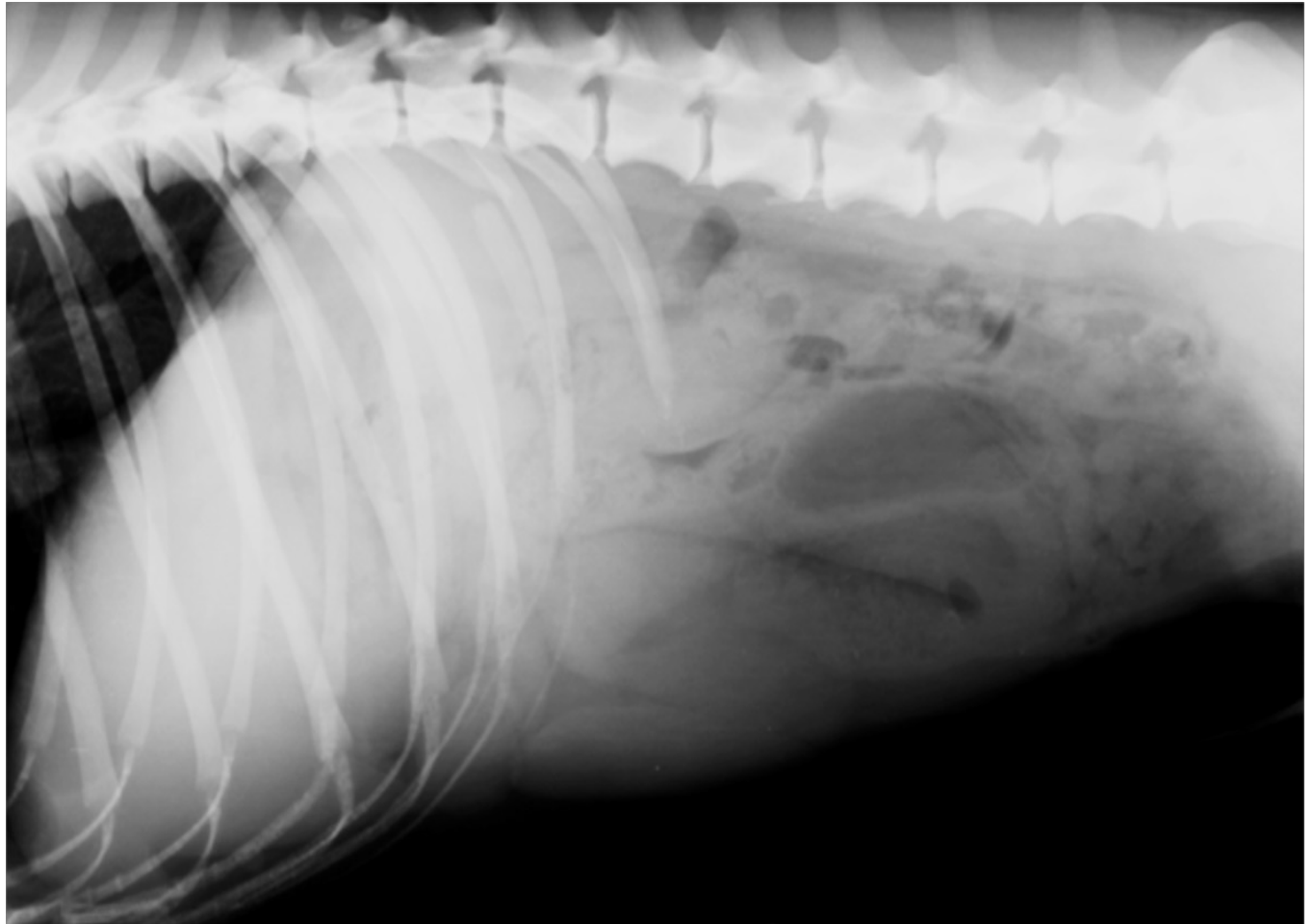
Systematische Beurteilung Dünndarm



Aber wie dann?







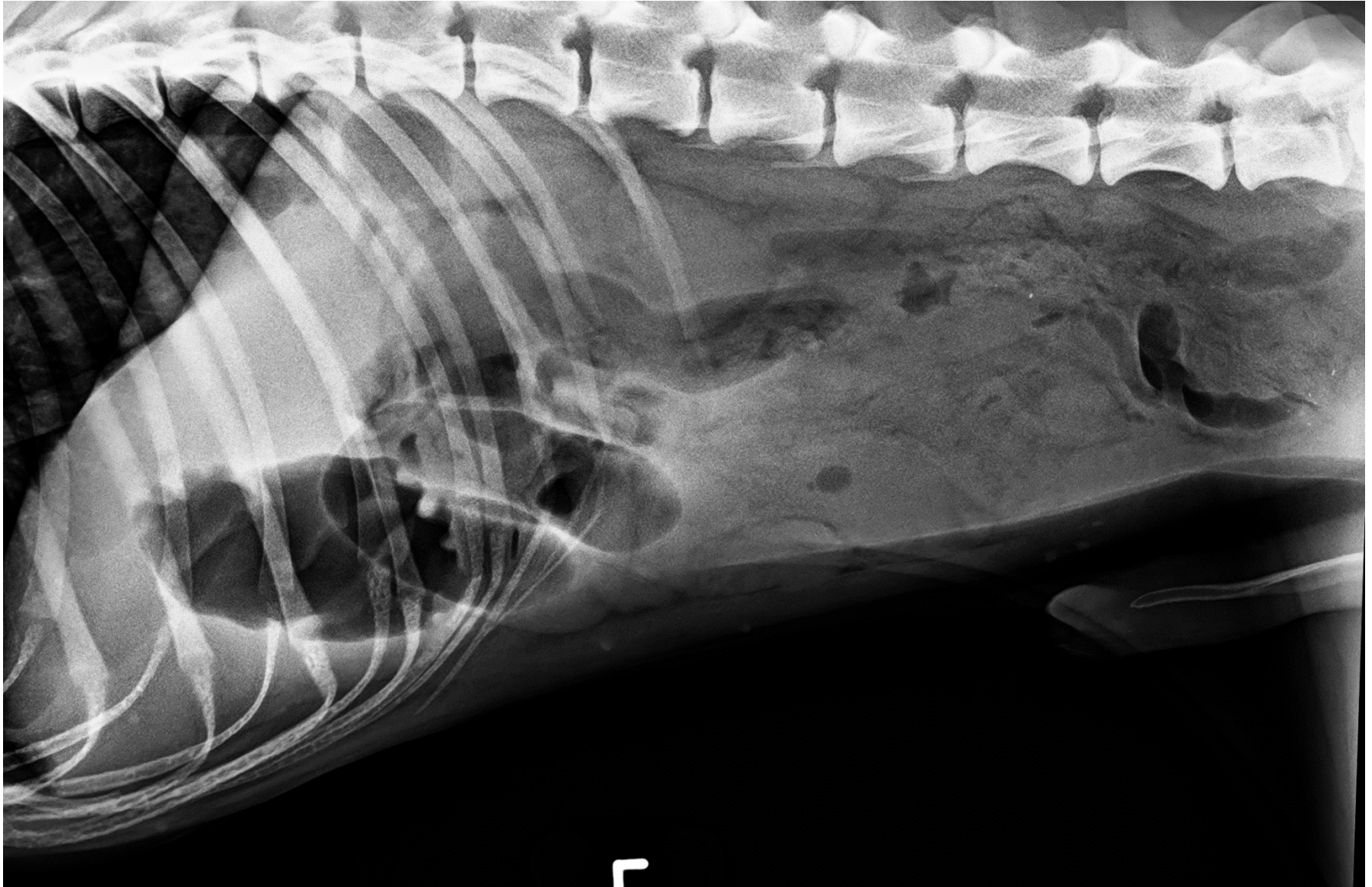
Chirurgisch

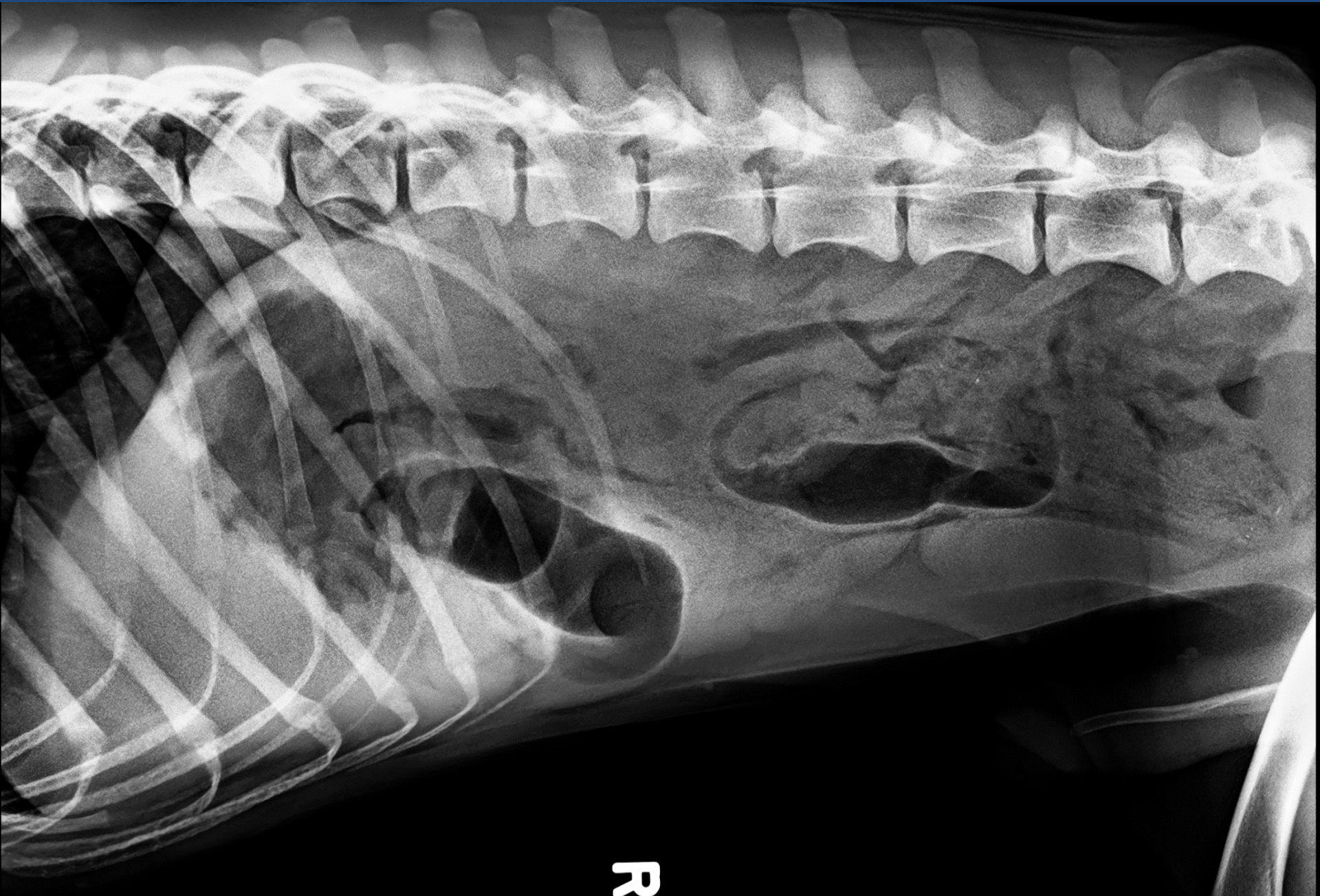
Griffon

2 Jahre, mk

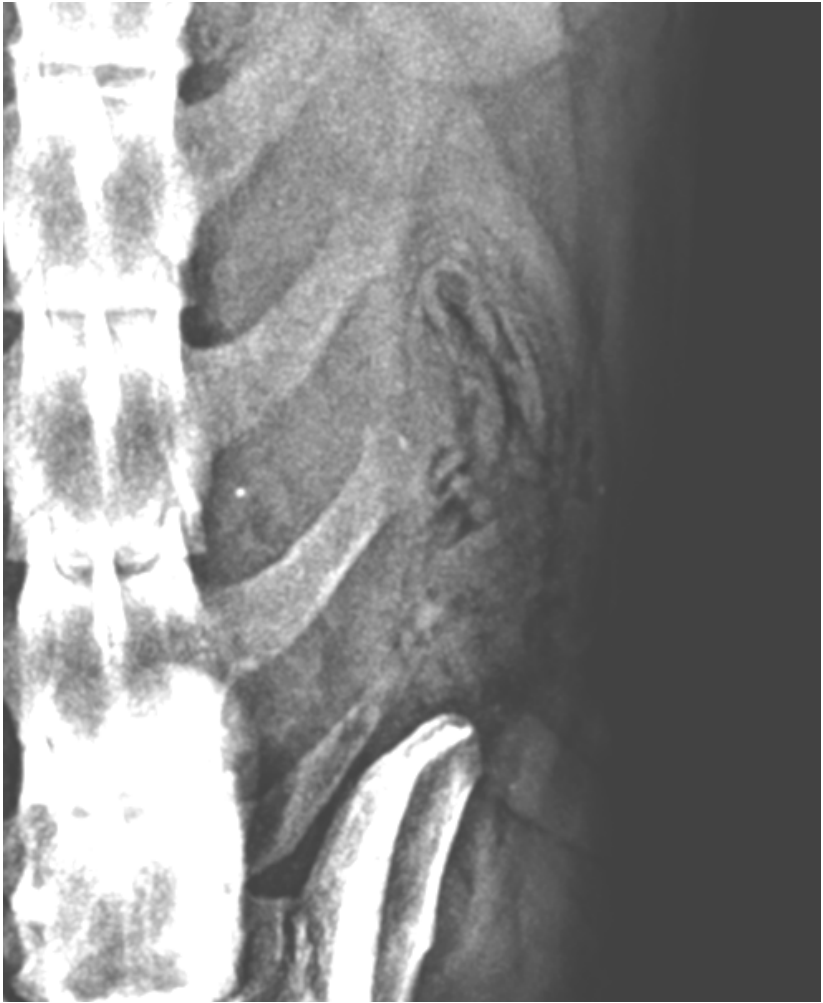
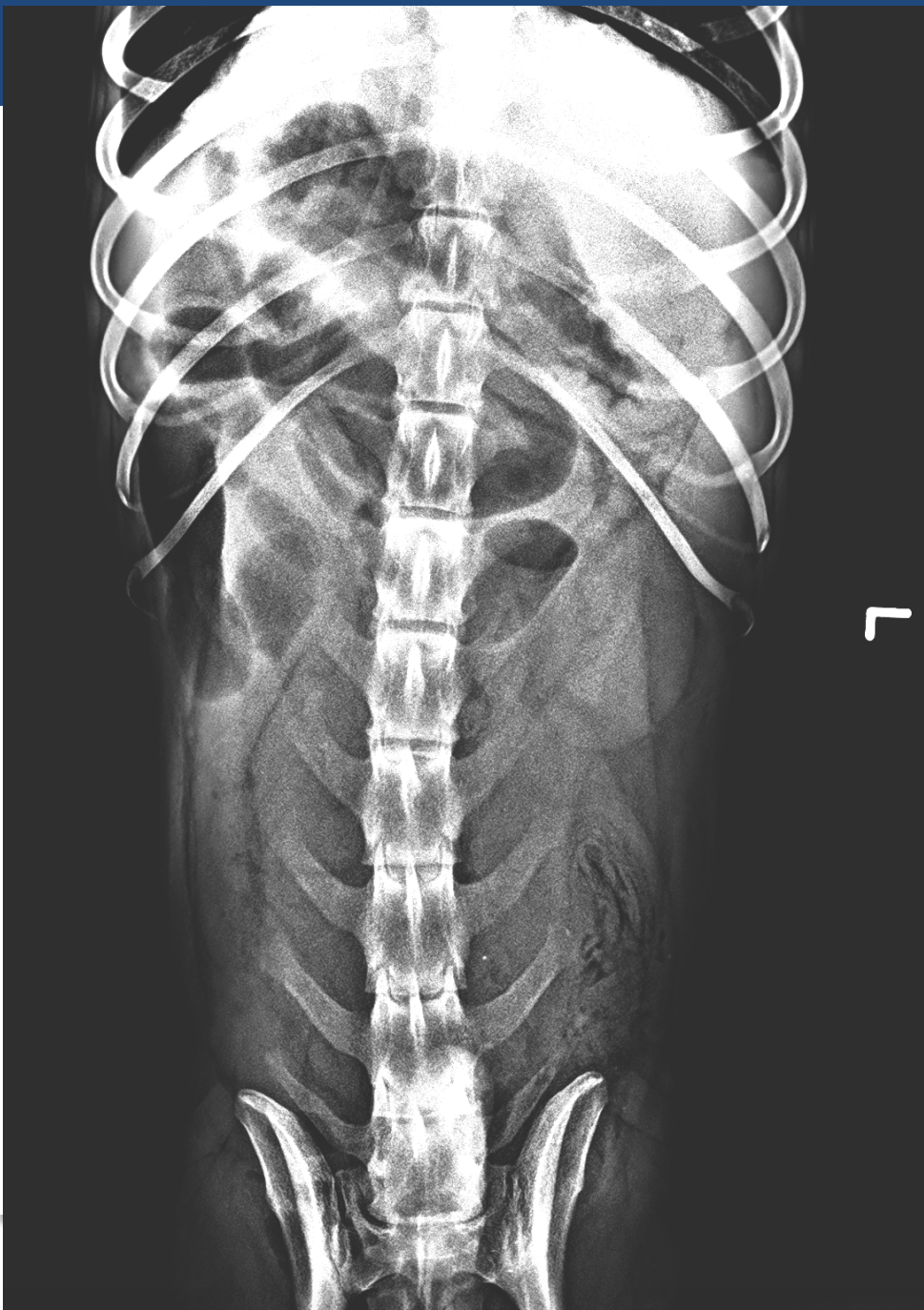
Erbrechen, isst nicht

Röntgen





R



Chirurgisch

DSH

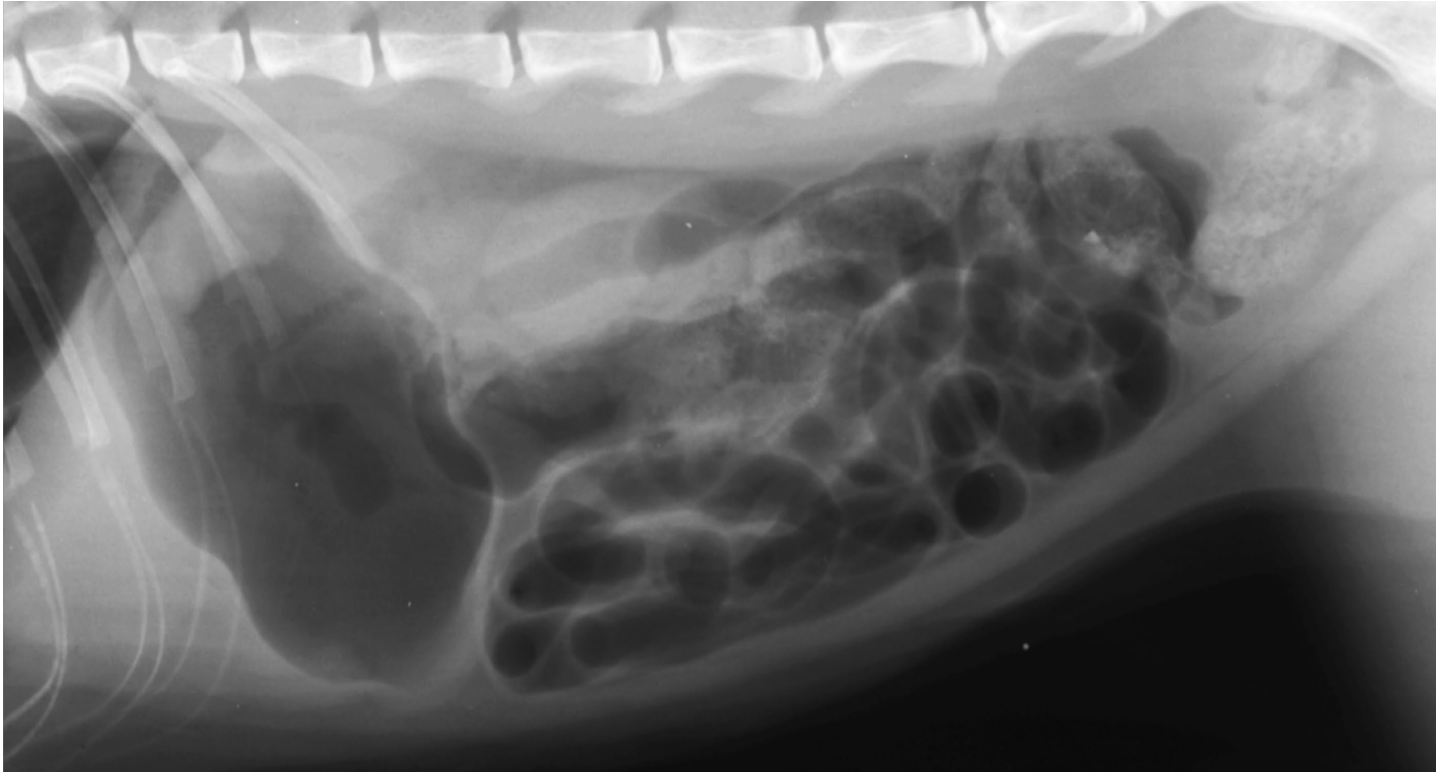
7 Monate, m

Erbrechen, wässriger Kot





Chirurgisch

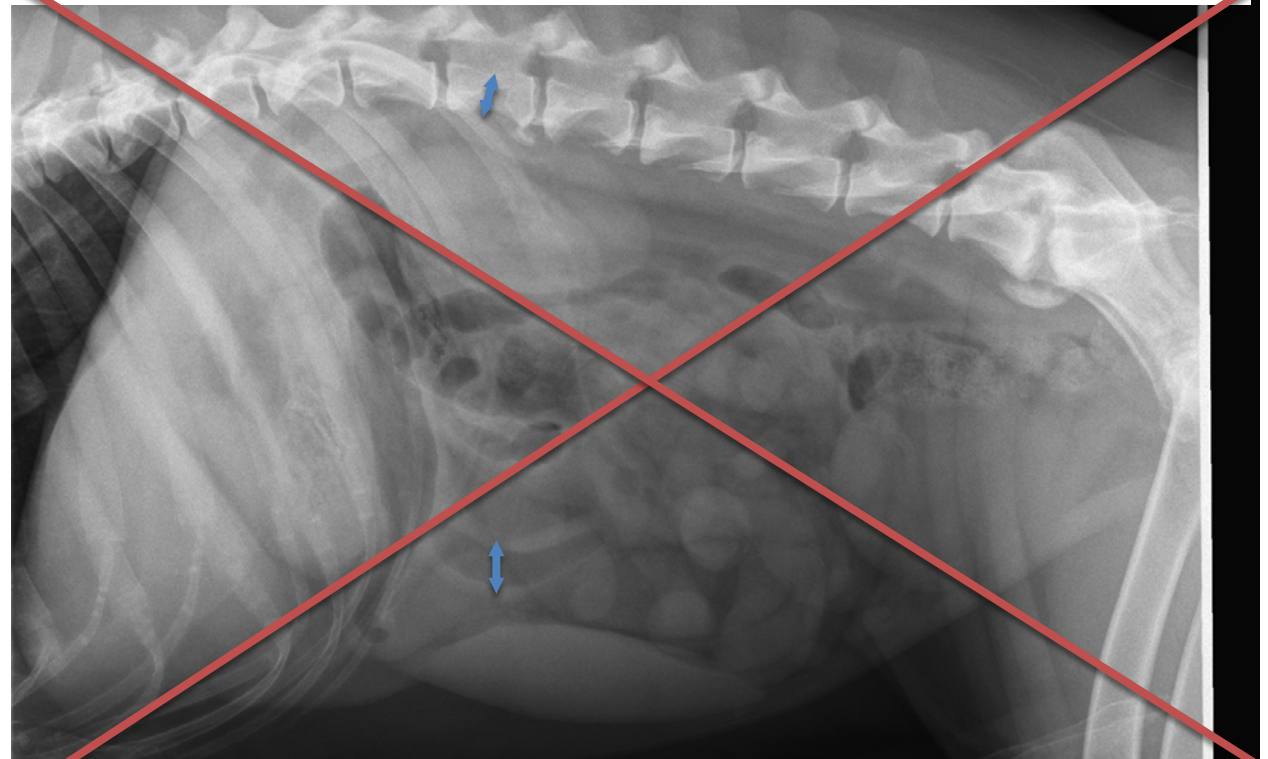


Nicht-chirurgisch

Wieso messen wir denn nicht einfach?

DOES MEASUREMENT OF SMALL INTESTINAL DIAMETER INCREASE DIAGNOSTIC ACCURACY OF RADIOGRAPHY IN DOGS WITH SUSPECTED INTESTINAL OBSTRUCTION?

TAÍZHA C. CIASCA, FREDERIC H. DAVID, CHRISTOPHER R. LAMB



SI/L5 ratio 1.7

66% sensitiv /
spezifisch

Unabhängig von der
Erfahrung

Diagnostische
Relevanz?

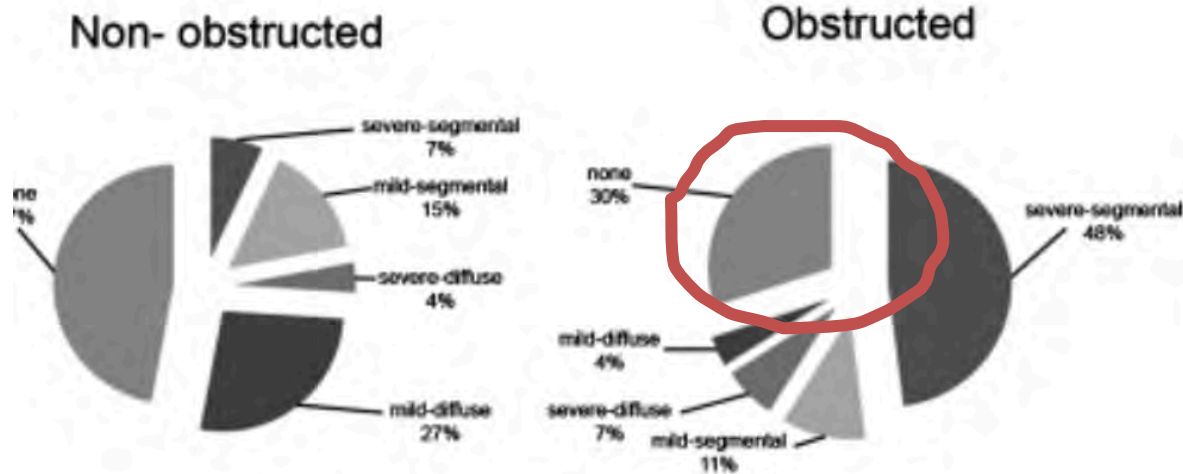
Graham et al. Quantitative estimation of intestinal dilation as a predictor of obstruction in the dog. J Small Anim Pract 1998

Alternativen zum Röntgen?

COMPARISON OF RADIOGRAPHY AND ULTRASONOGRAPHY FOR DIAGNOSING SMALL-INTESTINAL MECHANICAL OBSTRUCTION IN VOMITING DOGS

Vet Radiol Ultrasound 2011

AJAY SHARMA, MARGRET S. THOMPSON, PETER V. SCRIVANI, NATHAN L. DYKES, AMY E. YEAGER, SEAN R. FREER, HOLLIS N. ERB



Pattern of small-intestinal enlargement

Chirurgisch vs. Nicht-chirurgisch

US insbesondere überlegen für fadenförmige Fremdkörper
50% der falsch negativen Fälle im Röntgen



Sharma et al. Comparison of radiography and ultrasonography for diagnosing small-intestinal mechanical obstruction in vomiting dogs. Vet Radiol Ultrasound 2011

Mechanischer Ileus

Höhere diagnostische Genauigkeit als Röntgen

I.d.R. definitive Diagnose

82 Hunde mit akutem Erbrechen

R 70% definitive Diagnose

US 97% definitive Diagnose



Sharma et al. Comparison of radiography and ultrasonography for diagnosing small-intestinal mechanical obstruction in vomiting dogs. Vet Radiol Ultrasound 2011

Mechanischer Ileus

Spezifische Befunde

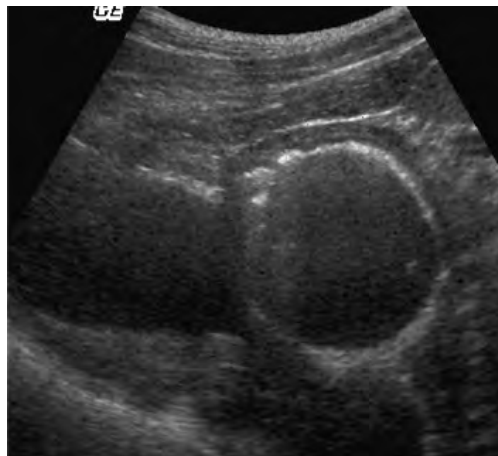
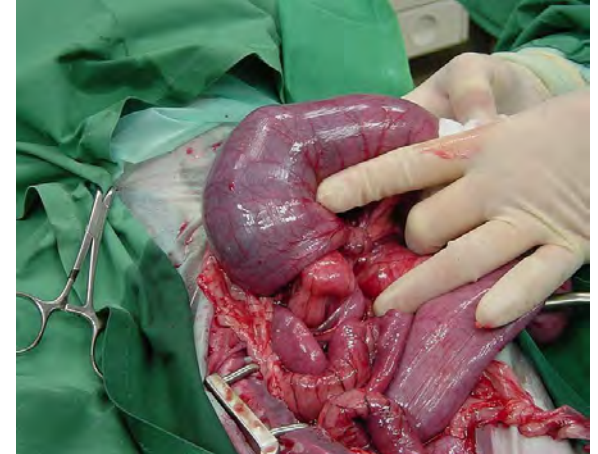


Mechanischer Ileus

Einfach

Schnell

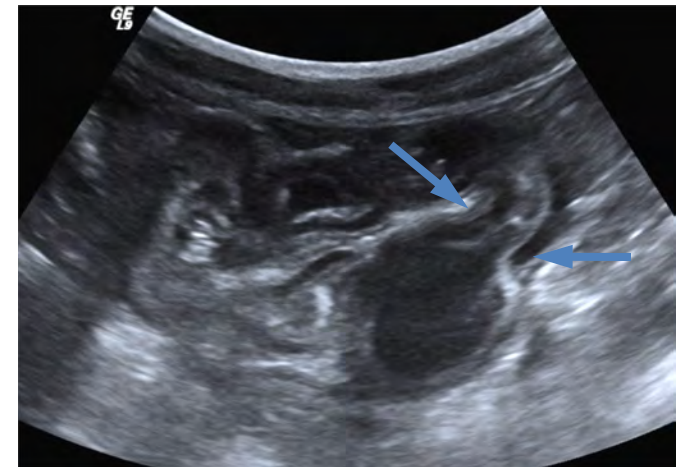
Hohe Diagnosesicherheit



Bridenileus

ULTRASONOGRAPHIC FEATURES OF INTESTINAL ENTRAPMENT IN DOGS

INAR SWIFT



Dilatierte Darmschlinge

Fokale Peritonitis

Pneumoperitoneum

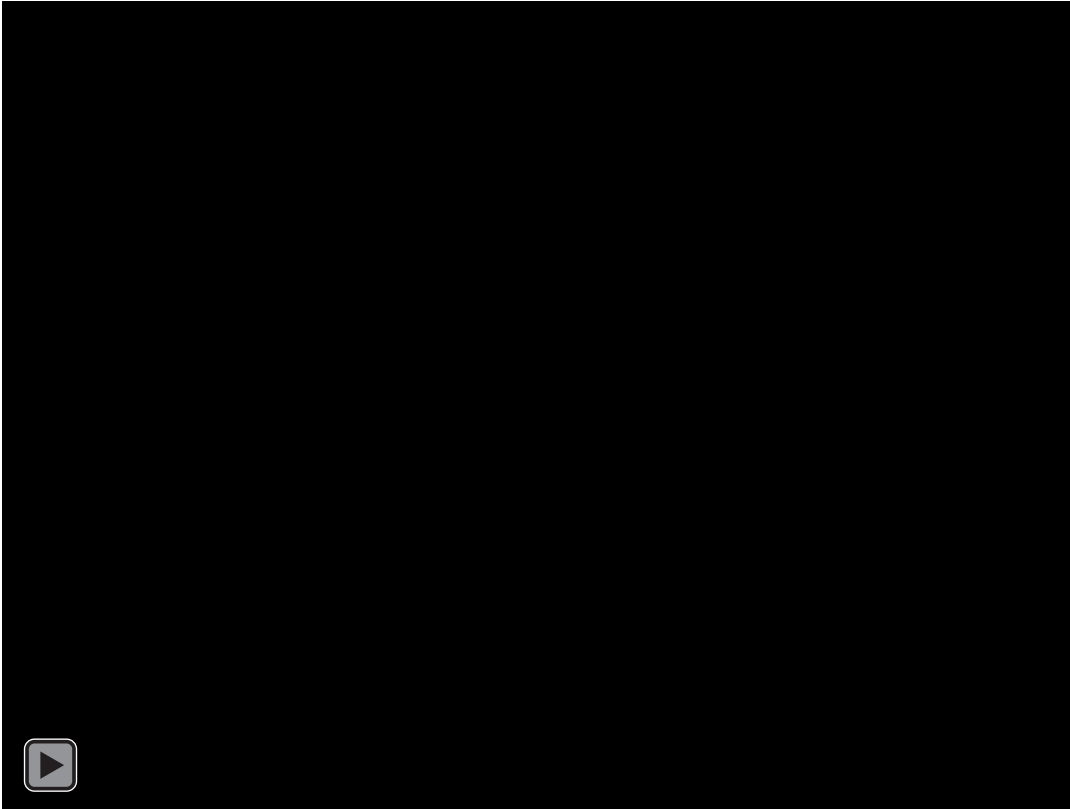


Choi et al. Sonographic Detection of Small Amounts of Free Peritoneal Gas in Beagle Dogs. J Vet Med Sci 2009

Braccini et al. Ultrasound versus plain film in the detection of pneumoperitoneum. Abdom Imaging 1996

Stapakis, Thickman. Diagnosis of pneumoperitoneum: abdominal CT vs upright chest film. J Comput Assist Tomogr 1992

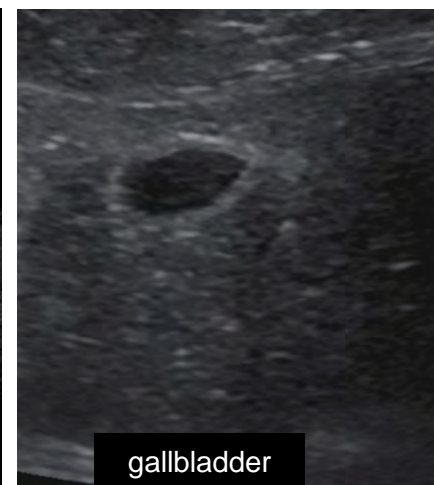
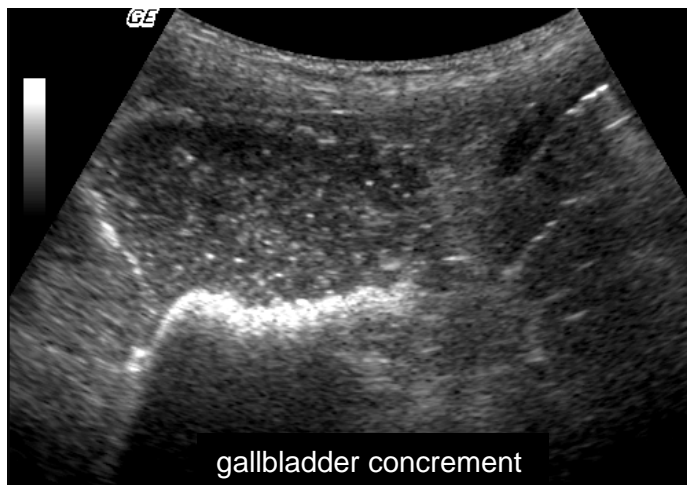
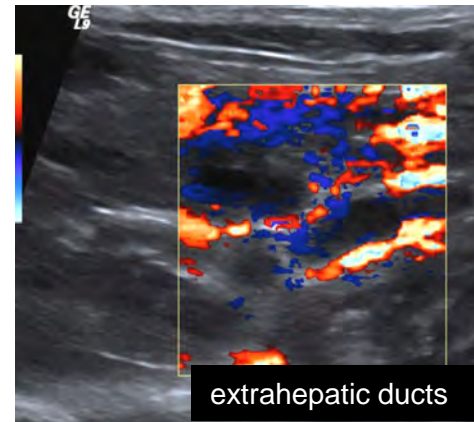
Hohe Diagnosesicherheit bei komplexen Fällen



**Besonders im
Zusammenhang mit Klinik &
Labor**

Bsp. PLE

Hohe Diagnosesicherheit bei komplexen Fällen



**Besonders im
Zusammenhang mit Klinik &
Labor**

Bsp. biliäre Obstruktionen

Also immer weiterführende Diagnostik?

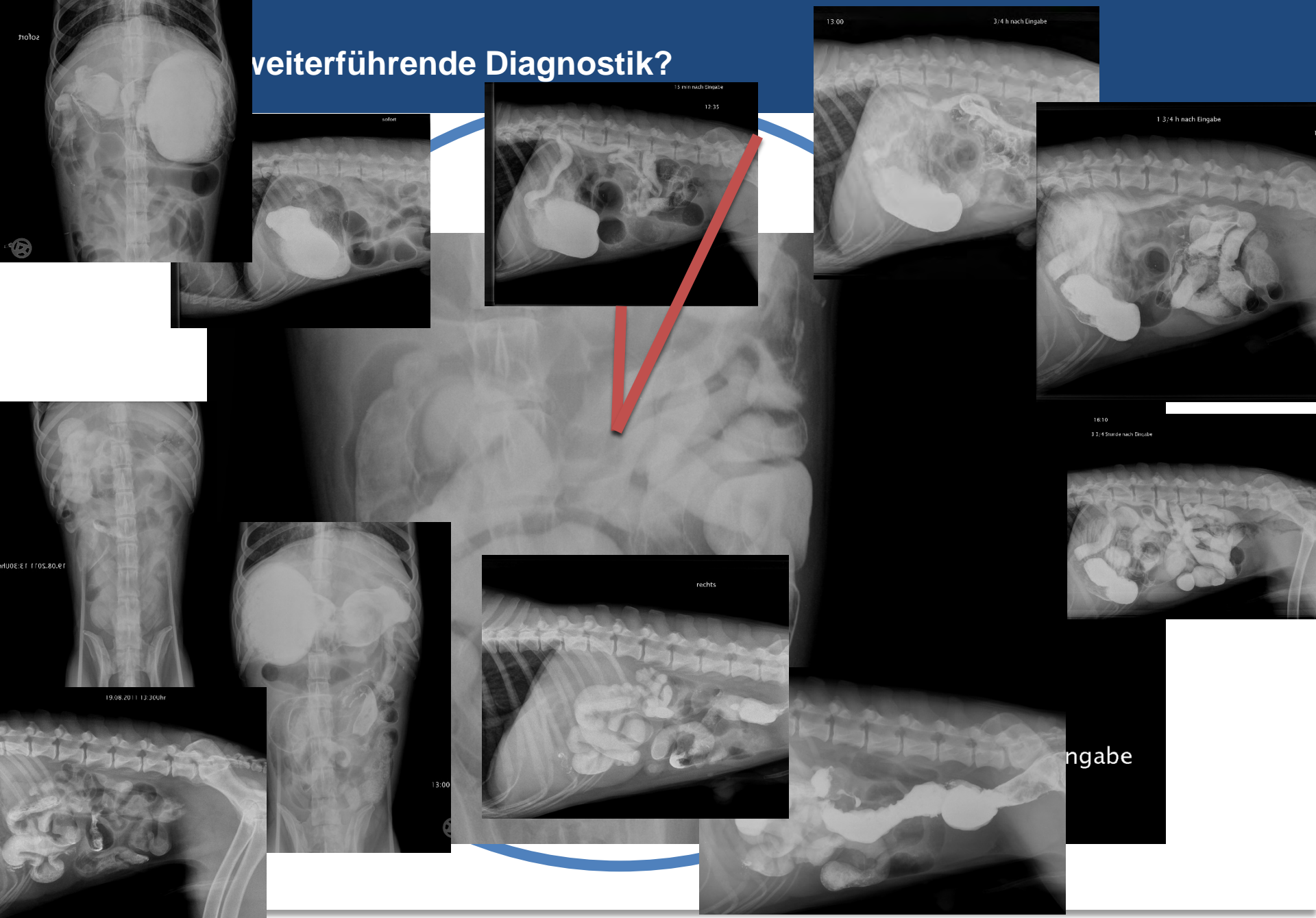


Anubis

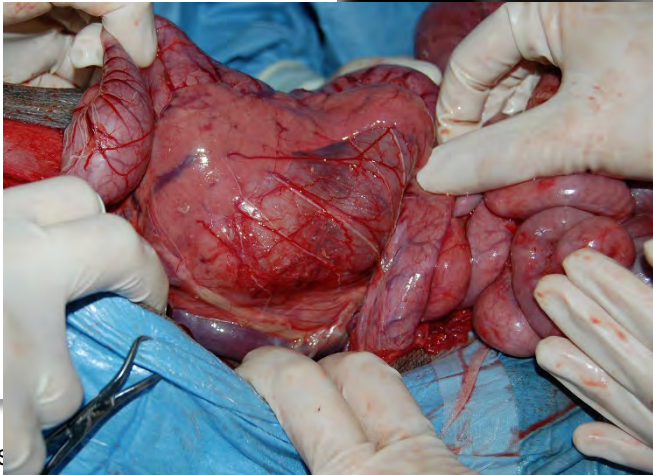
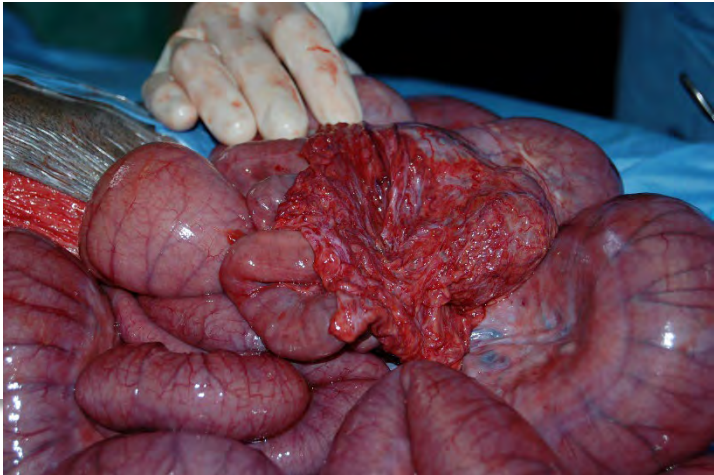
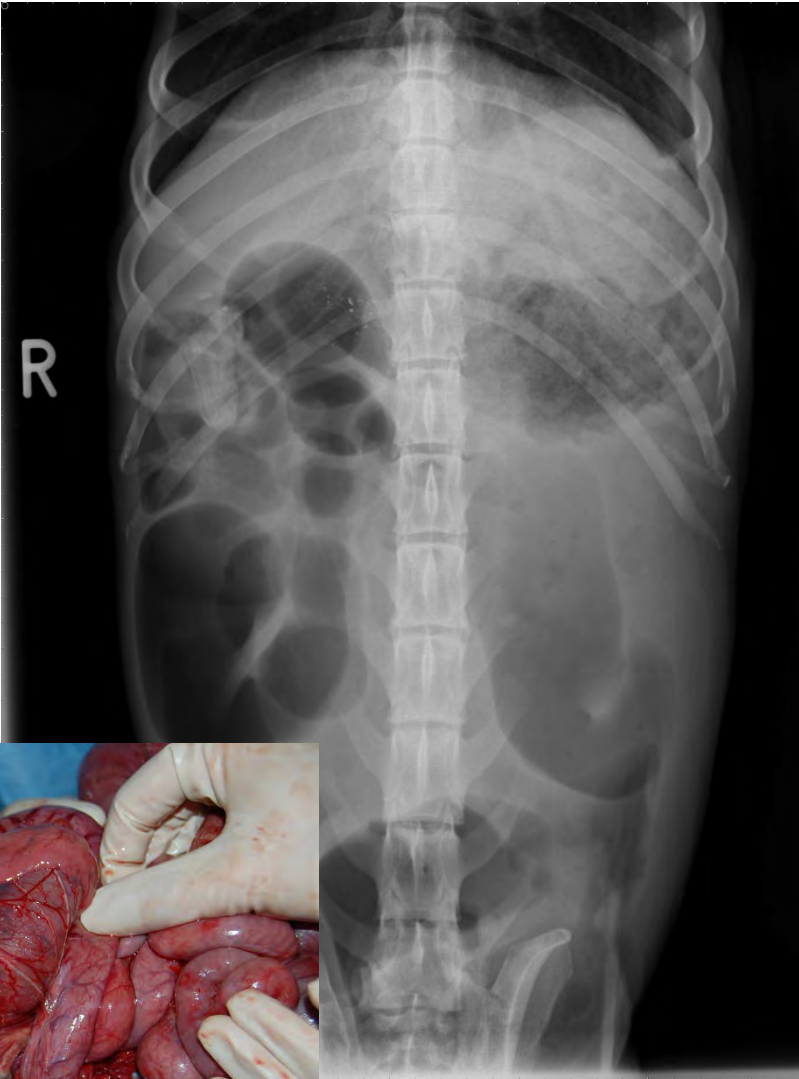
Dalmatiner, 4 Jahre
Akutes Erbrechen



weiterführende Diagnostik?



Anubis



Wahl des Diagnostikums

Auf die klinische Fragstellung zugeschnitten

Angepasst an die eigene Expertise

Ähnlich wie ALARA:

mit so wenig Aufwand & Strahlung wie möglich ans Ziel

Klinikum Veterinärmedizin
Klinik für Kleintiere - Radiologie
Justus-Liebig-Universität Gießen

